

AUTO SECURITY **COMPUTRACK**

GPS VEHICLE LOCATION UNIT INSTALLATION GUIDE

READ THIS GUIDE AT LEAST FOR YOUR FIRST INSTALLATION!

This GPS device is different, it's easy to install and it works!

COMPUTRACK MUST BE REGISTERED ON-LINE BEFORE TESTING



Proudly Made in the U.S.A.

TABLE OF CONTENTS

| | |
|---|------------|
| DO NOT USE TEST LIGHTS! - ALL OUTPUTS MUST USE RELAYS! | 2 |
| STARTER INTERRUPTS ONLY!..... | 2 |
| WEB REGISTRATION & CONFIGURATION | 3-5 |
| FIRST STEP -BASIC INSTALLATION | 6 |
| SECOND STEP – BASIC 2-WIRE CONNECTION..... | 7 |
| THIRD STEP - POWER UP TEST FOR BASIC INSTALLATION..... | 7 |
| BACK-UP BATTERY SWITCH..... | 8 |
| END OF MAT 401 CT BASIC INSTALLATION | 8 |
| ADVANCED INSTALLATION..... | 8 |
| WIRING COLOR CODES..... | 9 |
| BACK-UP BATTERY CHARGING..... | 9 |
| FINAL TEST PROCEDURE..... | 9 |
| THE INSTALLATION IS COMPLETE..... | 10 |
| COMPUTER / CELL – TEST PROCEDURE..... | 10 |

TECHNICIANS-DO NOT USE TEST LIGHTS! - ALL OUTPUTS MUST USE RELAYS* !

All output circuits must be isolated by wiring through standard Bosch SPDT style relays. The COMPUTRACK will not operate properly if relays are not used. USE A RELAY FOR EACH OUTPUT. If you must invert the polarity of a signal, such as for a siren/horn connection use a relay, do not a solid state inverter.

STARTER INTERRUPTS ONLY!
NO FUEL OR IGNITION INTERRUPTS ARE TO BE ATTEMPTED!

The CompuTrack Unit Must be Web Registered
READ Guide First, Before Installation!

- Welcome
- Congratulations on choosing the best tracking system because it has more features with less work.
- The COMPUTRACK tracking system represents a new milestone in installation simplicity. You have never had an easier or faster GPS tracking installation with so many user benefits.
- The COMPUTRACK tracking system was designed to be registered by persons having basic Internet skills. Internet training is beyond the scope of this document.
- With the COMPUTRACK tracking unit can be pre-registered before installation. If you are at an automobile dealership or other remote location where Internet access is not available, the COMPUTRACK Internet registration should be done BEFORE the actual installation.
- **THIS IS A CRITICAL STEP** – The COMPUTRACK **MUST** be located via the Internet or text message enabled cell phone after registration in order to properly program the COMPUTRACK's internal GPS Almanac memory. If this step is not done, the unit will not provide proper performance. The first location may take a little time to register initially. Office personnel can utilized to do the location and/or testing.
- This procedure allows the installer to test and observe the COMPUTRACK's proper operation.
- VERY COOL!

ON-LINE PRE-REGISTRATION

The CompuTrack unit can be registered anytime at:

<http://www.CompuTrackLive.com>

This web site appearance may differ.

Click on Register here under **New Customers**. ◀ If adding a unit to an existing account login.



Existing Customers

e-mail:

Forgot e-mail? [Link](#)

Password:

Forgot password? [Link](#)

Custom Advertisement HERE.

New Customers [Register here.](#)

◀ **CLICK HERE**

1. Enter the customer's information, in the Registration Screen as shown below*. Appearance of the screen may vary. See below.



Your Logo Here

CompuTrack

Personal Auto Management System

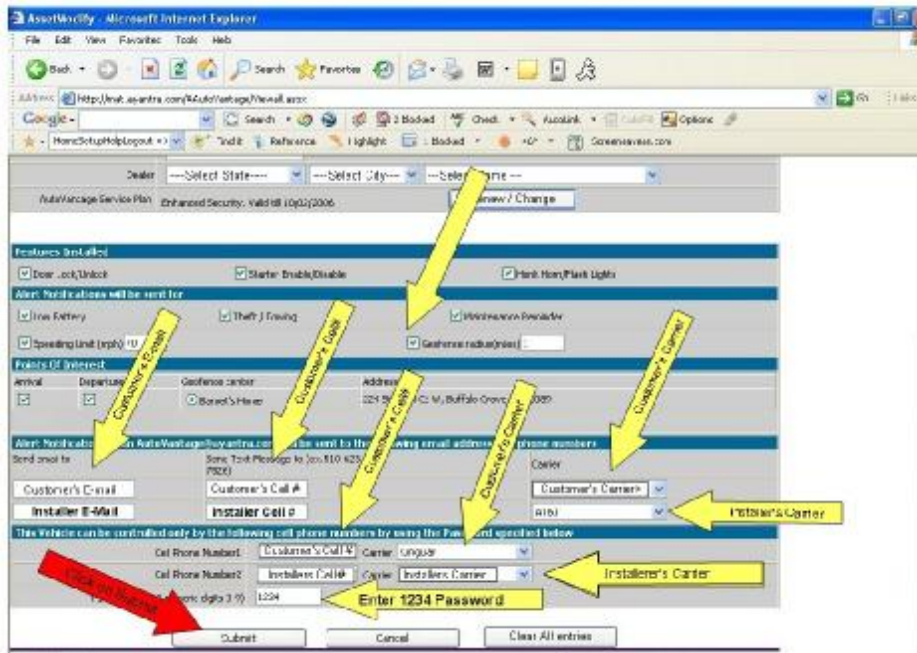
Fields marked with an asterisk * are required.

| New customer registration | |
|----------------------------------|--------------------------|
| First name * | <input type="text"/> |
| Last name * | <input type="text"/> |
| Address | |
| Street * | <input type="text"/> |
| City * | <input type="text"/> |
| State * | <input type="text"/> |
| Zip * | <input type="text"/> |
| Login information | |
| e-mail Id * | <input type="text"/> |
| Password * | <input type="password"/> |
| Re-type Password * | <input type="password"/> |
| AAutoVantage unit information | |
| 20 digit ICCID as on the label * | <input type="text"/> |

2. If you do not have the customer's information then enter "John Doe", Any Street, Any Town, Any City, Any State, 00000 and anymail@anymail.com or other data in the appropriate spaces.
3. This information must be updated later by the dealer or customer.
4. ENTER THE PASSWORD "1234" in the spots as requested.



5. Enter the **20 DIGIT SERIAL NUMBER on the LABEL.**
6. **Click on the "Agree" icon** at the bottom of the registration screen. The customer agreement is available on-line at anytime. If any of the required spaces do not contain data, the registration will not go through. You get an error message.
7. The "Home Screen" will now appear.
8. Click on HOME icon at the top of the screen.
9. At the Home Screen click on the **View/Edit** icon in the **Configuration** column.
10. The Configuration screen will open (see page 6).
11. Click on the features that you have installed, such as door unlock, horn/lights, starter disable, remote start/door lock and alarm trigger.
12. For testing purposes only, enter your text message enabled cellular phone number below the customer's box and then **AFTER TESTING** the customer information may be added and your cell is number removed, see below.
13. Click on the carrier drop down list and select *your* carrier.
14. Go to the top right of the Control Screen and click on Logout .
15. Click on the feature boxes that you are installing. By checking each box, that function icon will appear in the control screen after you submit the changes.
16. Select the alert functions that the customer has requested.
17. If you have the customer's e-mail, cell number and carrier please enter it on the first line of the Alert Notification section.
18. On the second line of the Alert Notification section enter your company's e-mail address and your cell phone number if you are going to perform testing on site from your cell phone.
19. Click on "Submit" icon to complete the programming.



20. This confirms the CompuTrack's initial registration and set-up.

COMPUTRACK System Components:

1 – COMPUTRACK Vehicle Location Unit Model

1 – Wire harness with in-line 5 Amp Fuse

1 – Quick Installation Guide

Owner's Guide Available On-Line

THE BASIC TWO-WIRE INSTALLATION

Test lights are no longer used for electrical testing under any circumstances! Due to the potential for serious bodily injury from exploding air bags and the probability of electrical damage by circuit overloading, please use a Digital Voltage Multi Meter (DVMM) for testing. Also, do not use Scotch-Loks™, T-Taps or simple “wrap and tape” procedures, properly soldered connections using Rosin-Core solder or at the very least, properly crimped with good quality seamless connectors only!

The CompuTrack is ideally suited to be mounted UNDER OR IN the front or rear seats, and is limited only by available space and signal reception. Make very sure that unit does not come into contact with any seat mechanisms, cables, tracks or motors. *You will soon feel that CompuTrack is 50% installed before you receive it.* **Seats may have a wide metal frame; do not mount directly under the frame. Move the seat back and forth to make sure the frame isn't directly over the CompuTrack.**

You can also mount the COMPUTRACK just below the vehicle's non-metallic top dash pad or rear parcel shelf, making sure you get GPS signals. Please be cautious of the air bags' operating space. Signal testing is done by temporarily connecting power and ground and placing the COMPUTRACK in the desired location. Watch the LEDs for signal lock, (2 minutes). Make sure that the vehicle's windows are not covered with any metallic film that could block GPS signals. OEM in-glass defroster grids or antennas do not normally have any effect on reception.

Certain years of Mercedes-Benz or BMW vehicles may have factory coated glass that reduces radio signals from getting inside the vehicle. If you are not sure about the windows, use the COMPUTRACK test procedure mentioned above.

The COMPUTRACK can be mounted with wire ties under the seat to the seat frame, below the seat cushion or in the seat back. The case mounting holes will accept wire-ties for mounting. Make sure, when someone sits in the seat that seat springs do not contact the COMPUTRACK. Move the seat forward and back fully to make sure the unit or the harness is not exposed. The COMPUTRACK may also be mounted by heavy-duty high-quality double-faced adhesive tape or Velcro® to the floor pan and covered with carpet. Please insure that the COMPUTRACK harness is securely mounted to relieve any strain.



Under Front Seat Mounting Location



Under Rear Seat Mounting Locations

SECOND STEP – BASIC 2-WIRE CONNECTION

Leave the harness disconnected from the COMPUTRACK temporarily and make sure the Back-Up Battery switch is turned OFF. Connect the COMPUTRACK BLACK wire to a known good ground point. Check ground with a meter if you are not sure. Connect the COMPUTRACK RED wire to a known good source of full-time 12 volt positive power. Make sure that your source of power is not lost due to factory relays or anti-battery run-down features. These circuits usually take 15 to 30 minutes of inactivity to engage.

As you know, a 5-amp fuse MUST closely installed to the source of full-time power you have chosen. If you are connecting the RED wire directly to the vehicle's Positive Battery Post, then a suitable fuse MUST be installed within 12 inches of the positive battery terminal. A second 5-amp fuse may also be used at the AAutoVage's mounting location. **DO NOT MULTIPLE COMMUNICATIONS DEVICES TO THE SAME SOURCE OF POWER AND / OR GROUND.**

The AAutoVage's wiring harness must remain unplugged until you are ready for testing at the end of your installation. The most basic COMPUTRACK installation requires only **two wires to be** connected; a good ground and a full-time 12-volt power. For more features, more vehicle circuits will have to be located.

THIRD STEP - POWER UP TEST FOR BASIC INSTALLATION

Make sure your vehicle is parked outside at least 30 feet away from buildings so that GPS signals are not blocked, Make sure the back-up battery switch is **OFF**.

While the CompuTrack tracking unit has an ultra-sensitive GPS receiver and antenna, parking the vehicle outside at least 30 feet from buildings which insures that the unit's first location information is properly received.

With the COMPUTRACK tracking unit positioned near its permanent mounting location, plug its keyed wire harness or dealer cigarette power adapter into "Input/Output" jack on the side of the case. Make sure the COMPUTRACK ID label is facing up to properly position the built-in GPS & CELL antennas. The GREEN (CELL) and RED (GPS) LEDs will start flashing. Within one minute, the GREEN LED will change from flashing to solid meaning that the COMPUTRACK is communicating with Cingular GSM (Global System for Mobile

Communications) digital network. Shortly after the GREEN LED goes solid, the RED LED will also go solid (usually within two minutes). This indicates that the unit has now acquired GPS lock. If the permanent mounting location is to be under the seat, place the COMPUTRACK there wait for at least 2 minutes and then visually recheck the LEDs to make sure they are both on solid. Remember the case label side goes up. If the RED LED continues to flash for more than 3 minutes, choose another mounting and or vehicle location and re-test. . If the RED LED is flashing once every Eight (8) seconds the unit has entered battery save mode. This conserves power by turning off the GPS receiver, the last known location is saved in memory and available if the unit is located. When the engine is started the RED LED will change back to solid display.

Turn the back-up battery switch to **ON** (see arrow below).

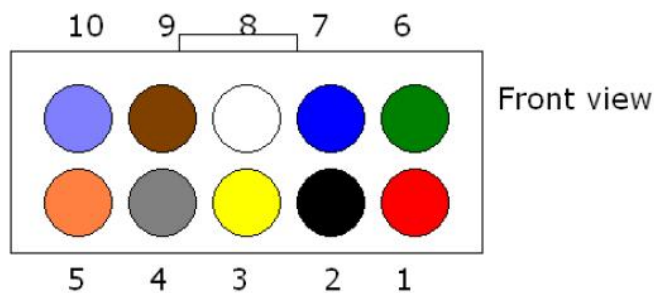


You may now permanently mount the COMPUTRACK and secure its wires. If you have mounted the unit under the seat, you may mount it under the carpet, foam pad or wire-tie it to the seat frame so it cannot be seen if someone looks under the seat.

THIS IS THE END OF COMPUTRACK BASIC INSTALLATION DO NOT PROCEED UNLESS YOU ARE PERFORMING AN ADVANCED INSTALLATION

ADVANCED INSTALLATION SECTION

PLEASE REVIEW THE COLOR CODES BELOW BEFORE INSTALLATION



| Pin # | Wire | Function | Input/Output | Sink | Current | Note |
|-------|--------|--------------------------|--------------|------|---------|---|
| 1 | Red | +12 VDC | - | - | - | - |
| 2 | Black | Ground | - | - | - | - |
| 3 | Yellow | Not Used | Input (1) | - | - | - |
| 4 | Gray | Horn AND/OR Flash Lights | Output (3) | Sink | 250 mA | Connect through Relay's to car horn and/or Lights circuits. Active low Output. |
| 5 | Orange | Starter | Output (4) | Sink | 250 mA | Connect through Relay to the car Starter circuit. Active low = Starter Enable. Open = Starter Disable |
| 6 | Green | Door Lock | Output (1) | Sink | 250 mA | Active Low and single pulse |
| 7 | Blue | Un-lock Door | Output (2) | Sink | 250 mA | Active Low and single pulse |
| 8 | White | Alarm Trigger | Input (2) | - | - | Siren Sense + OEM & Aftermarket |
| 9 | Brown | Not Used | Input (3) | - | - | - |
| 10 | Violet | Not Used | Input (4) | - | - | - |

RELAYS MUST BE USED ON ALL OUTPUTS FOR ISOLATION!

| Wire Color and Polarity | Circuit Description |
|------------------------------------|--|
| GRAY — CAR-FINDER | CAR FINDER HORN/LIGHTS – This pulsating negative output drives up to 2 relays to sound the vehicle’s horns and flash its parking lights. For dual circuit parking lights connect a second light relay that is driven off the first one, otherwise one relay for lights and one relay for horns. Observe proper polarities. |
| ORANGE — STARTER INTERRUPT | Starter Interrupt (-) – The ORANGE wire provides a latched ground output signal when the Starter interrupt command is sent. When this feature is activated it will cause an optional Bosch style relay to open when an attempt is made to start the engine, thus preventing the starter from operating until another signal is sent to the COMPUTRACK to remove the ground signal from the ORANGE wire. This is designed specifically to <u>INTERRUPT STARTERS ONLY, NOT IGNITION OR FUEL PUMP CIRCUITS.</u> Installation of this circuit to interrupt the fuel or ignition circuits places the installing dealer in default of their CompuTrack agreement and makes them fully responsible for <i>any and all</i> actions that may result. |
| GREEN — DOOR LOCK / REMOTE STARTER | DOOR LOCK COMMAND – This is a conventional NEGATIVE door lock output designed to be connected via a relay to factory or aftermarket door lock actuators. This output may also be used to trigger remote starters. |
| BLUE — DOOR UNLOCK | DOOR UNLOCK COMMAND – This is a conventional NEGATIVE door unlock output designed to be connected via a relay to factory or aftermarket door lock actuators,. |
| WHITE + ALARM SENSE | THEFT ALARM – Theft alarm sense input – Alarm sounding devices normally are powered by 12 volts positive and are monitored by this COMPUTRACK 12 volt positive input. When the sounding device is powered for 15 or more seconds it causes the COMPUTRACK to send an alert message to the owner. Should the sounding device be negatively driven, use a relay to invert the polarity. To prevent unintended messages from being sent only three messages can be sent within a 24 hour period. |

Back-Up Battery:

The internal back-up battery recharges while the engine is running. If the power is cut to the COMPUTRACK an emergency message is sent to the customer and the back-up battery will provide 2 hours of power and continue to send location messages until the back-up battery is exhausted or power is restored.

FINAL TEST PROCEDURE - TRACKING UNIT HAS BEEN ALREADY REGISTERED

1. Move the vehicle outside, and make sure it is at least 20 to 30 feet minimum away from any buildings! If in an urban area, allow at least 100 feet.
2. Point your web browser to; <http://www.CompuTrackLive.com>
This web site appearance may differ.
3. Click at the far right side of the screen on “[Control](#)”.
4. The Control screen will open.
5. Click on the Grey Rectangle icon, “Get Location Now”.
6. Confirm your choice by clicking Okay.
7. The Message Transmission Screen Tower icon will appear. The speed of this step will depend on your Internet connection (20 to 45 seconds).
8. When the message is received, the Control Screen will reappear.

9. **New!** Location and Mileage(GPS Current) will be revolving at the top of the Control screen as the map shows the vehicle's current location.
10. Click on each advanced feature that you have installed.
11. If the feature that you installed does not appear on the Control Screen Menu then go back to the configuration screen, check the box and click on Submit.
12. After you have confirmed proper operation of the installed features turn the back-up battery switch ON and secure the COMPUTRACK to its permanent mounting location.

Alternative Cell - Test Procedure

This section outlines the use of a cell phone to perform the AAutoVage's first location. After a successful location the installed advanced features can be tested. Due to the vast number of cell phone models this guide can only provide a generic procedure.

1. Go to your phone's message section.
2. Start a new text message.
3. In the "to:" section enter the AAutoVage's 10 digit Mobile Identification Number. You do not have to include the first number (1).
4. Move to the body of the text message.
5. Enter the temporary password, "1234" that was previously setup online.
6. Enter a space.
7. Then enter the number "1" for a location command.
8. This will send a location command to the CompuTrack.
9. Depending on the amount of network activity, you should receive a text message acknowledgement shortly.
10. The acknowledgement message will have a typical header "36245 CompuTrack" This may vary in content.
11. Open the message.
12. The message will say, (PA: Locate) unit number and a location at / near the vehicle's address, city, state and zip code.

NOTES: Other Cell - Test commands available are 2 (Door Lock / Remote Start), 3 (Door Unlock), 4 (Horn Honk / Light Flash), & 5 (Start Live Track). The Live Track is not to be tested since the location command was already preformed. The starter disable can only be tested via the Internet.

THE COMPUTRACK INSTALLATION IS COMPLETE!

COMPUTRACK Installation Worksheet

COMPUTRACK Information:

CompuTrack Serial Number: _____
(This 20-digit number on the label)

CompuTrack Mobile Identification Number: _____
(This is the unit's 10-digit "phone number")

Customer & Vehicle Information:

Customer Contact info

Name: _____

Street Address: _____

City, State, ZIP: _____

Cell Phone Number: _____

Cellular Provider: _____

Email address: _____

Vehicle License Plate State & #: _____

17 Digit Vehicle Identification Number: _____

Vehicle Manufacturer: _____

Model: _____

Year: _____

Color: _____

Special Notes:
